



Lightweight and quick to deploy, the inflatable Single Decontamination Shower from MFC International allows for rapid response in a decontamination scenario. Fully inflatable, the shower can be set up in a matter of minutes, and will stay standing without continuous inflation.

With no mechanical framework the shelters are lightweight to transport and compact to store. Showers can be used on hard or soft standing, and guy ropes are provided for securing in position during inclement weather.

Raised floor panels prevent contact with contaminated shower wash-off, which is collected in a chemically resistant sump. Sleeves for pumped extraction of contaminated water are included as standard.

Single Decontamination Showers come with a viewing window and optional chemically resistant nitrile rubber gloves to allow assisted decontamination by a third party stood outside of the unit.

FEATURES

- Lightweight and easily portable
- Set up within a matter of minutes and will stay standing without continuous inflation
- Raised floor panels prevent contact with contaminated shower wash off which is collected in a PVC chemically resistant sump
- Sleeves for pumped extraction of contaminated water are included as standard
- Showers fitted with the optional sleeves and chemical resistant nitrile rubber gloves allow a second person to assist washing down the contaminated person
- Can be used on hard or soft standing and guy ropes are provided for securing in position
- Minimal training, servicing and maintenance costs
- Available in Yellow PU material or Orange PVC material

USED FOR

- Decontamination scenarios

SUPPLIED WITH

- Valise
- Repair kit
- Inflation hose - 1m (for use with 8 bar regulator)

OPTIONS & ACCESSORIES

- Integral sump unit
- Gloves & sleeves
- Non-slip self draining matting
- Colour coded groundsheet
- Customer branding
- Electric inflater
- 8 bar regulator

TECHNICAL DATA	Single Decon	Single Decon with Sump
Length (cm)	160	160 +140
Int. Length (cm)	120	120
Width (cm)	147	147
Int. Width (cm)	100	100
Height (cm)	265	265
Int. Height (cm)	240	240
Working Pressure (bar)	0.38	0.38
No. of chambers	1	1
Air Requirements (ltr)	650	825
Max. Water Inlet Pressure (bar)	3	3
Recommended pump flow-capacity (liters/minute)	7 ltr/min per nozzle	7 ltr/min per nozzle
Number of Shower Nozzles	2	2
Number of Connectors	2	2
Number of Tubing Sleeves,	1	1
Pack size (cm) - TPU	74 x 45 x 30	74 x 45 x 30
- PVC	88 x 71 x 50	88 x 71 x 50
Weight (kg) - TPU	25	28
- PVC	32	35

PRODUCT CODES	TPU	PVC
Decon Shower	DSW022/020	DSW022/025
Decon Shower with Gloves	DSW022/021	DSW022/024
Decon Shower with Sump	TBC	TBC
Shower with Sump & Gloves	TBC	TBC

All codes above are for showers with Camlock couplings, alternative couplings are available on request, contact the sales team for details.

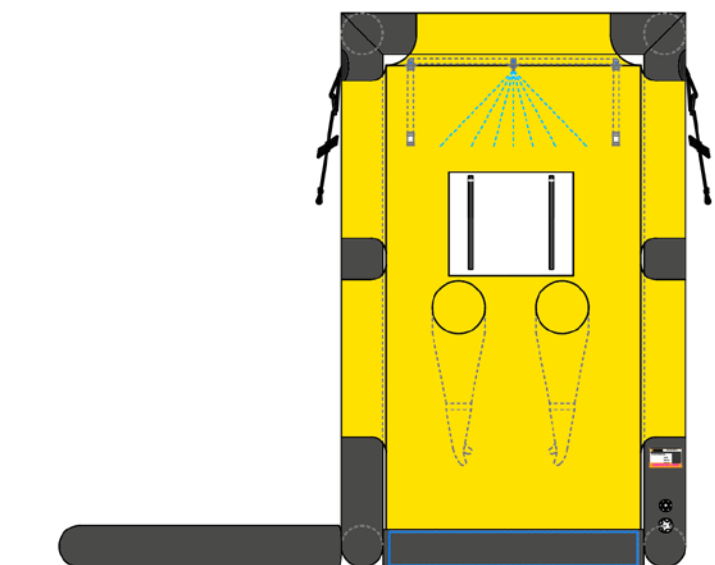
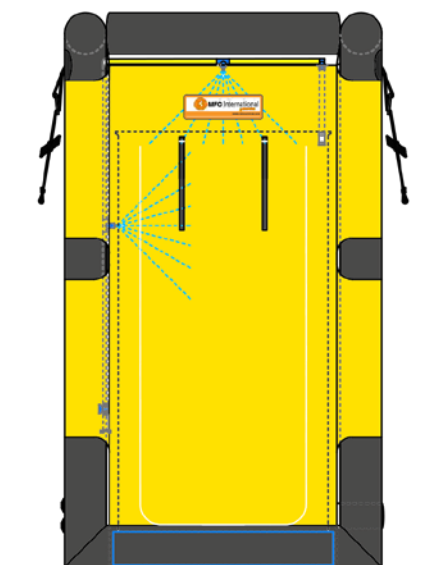


Yellow TPU Version



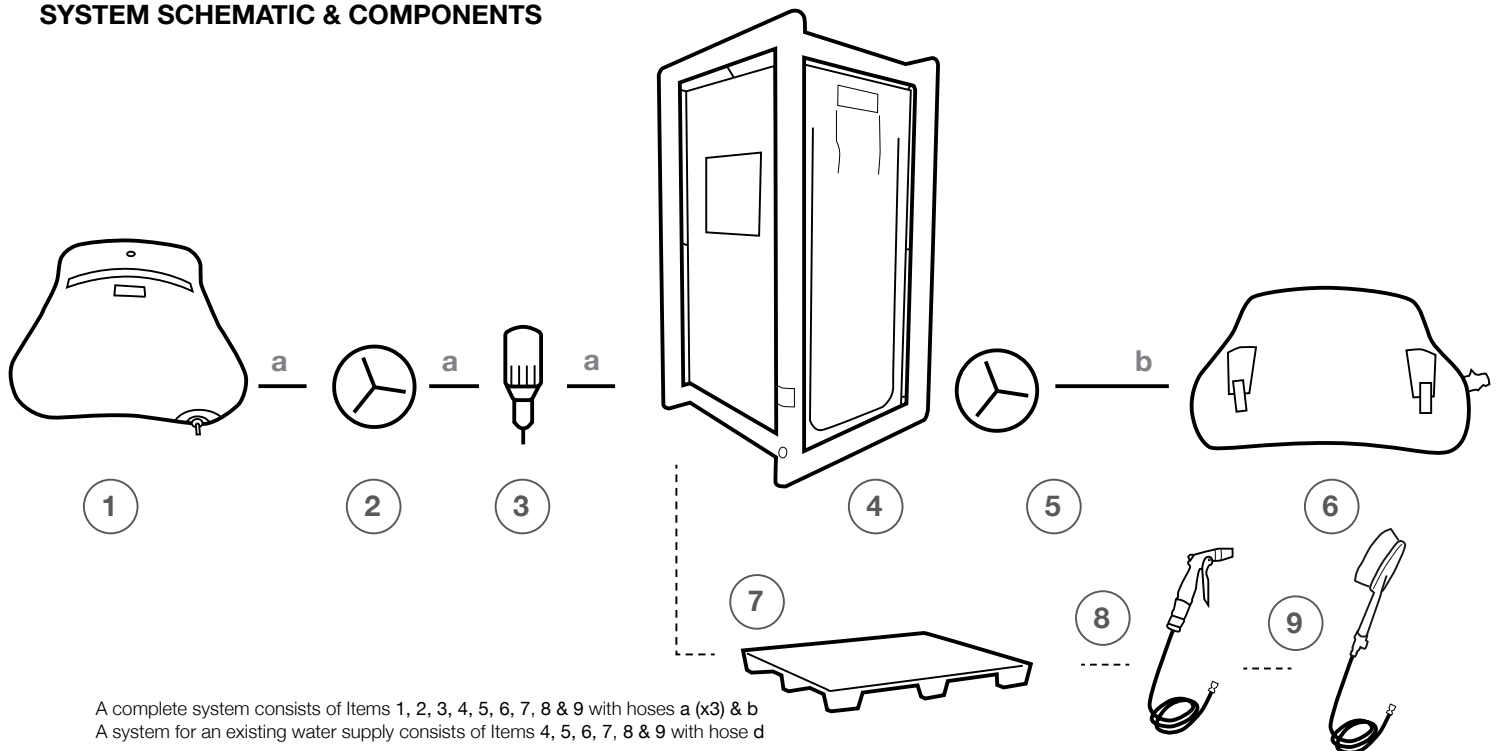
Orange PVC Version

DETAIL DRAWING



Shown with optional gloves and sump

SYSTEM SCHEMATIC & COMPONENTS



1



Clean Water Pillow Tank (1000ltr)
(x1 WS0028)
- see website for other sizes

2



Inlet Water Pump
(x1 DSA002)

3



Dosatron with Trolley
(x1 DSA005)

4



Single Decon Shower
(Yellow shower DSW022)
See product codes table (previous page) for all product codes

5



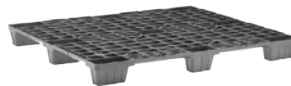
Submersible Pump
in Single Decon
(x1 DSA004 - 240V,
DSA003 - 110V)

6



Waste Water Pillow Tank (1000ltr)
(x1 WS0017)
- see website for other sizes

7



Pallet for Single Decon
(x1 DSA007)

8



Spray Gun & Hose
(DSA008)

9



Hand Brush & Hose
(180035)

a

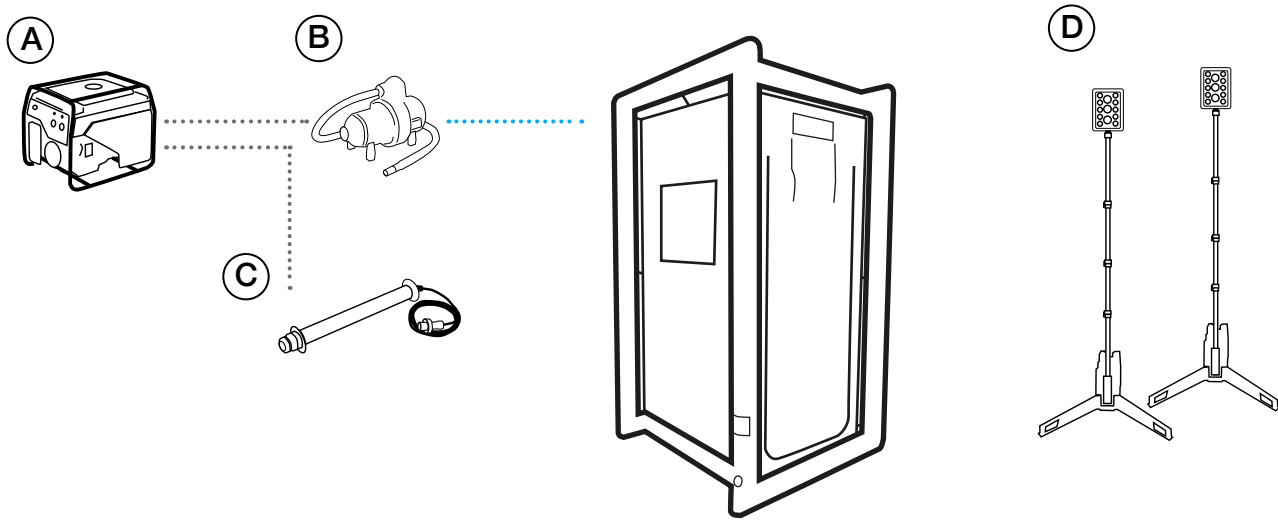
Green Hose - Clean Water (2m)
Female to Female Camlock Hose
(3x HS-05-02-02-22-22)

b

Clear Hose - Waste Water (3.5m)
Female to Female Camlock Hose
(1x HS-06-06-02-22-22)

N.B. CAMLOCK couplings used on components and hoses as standard, other couplings are available on request.

ACCESSORY SCHEMATIC



(A)



Generator
Honda 5.5kW 4-stroke petrol
(1x EG5500CL)

(C)



Waterproof LED Interior Lights
23W, 2300 Lumens
(1x SLZ2323/5/01DWD - IP67 Lamp)
(1x SLZ005 - Hanging kit)

(B)



Electric Inflator
Bravo 2000 - 2kW, 230VAC
(1x 180026)
*Equipment for inflation from compressed
air cylinder also available*

(D)



**Waterproof LED Exterior Rechargeable
Flood Lights - Max 16,000 Lumens**
(2x NSSOLARISPRO)